









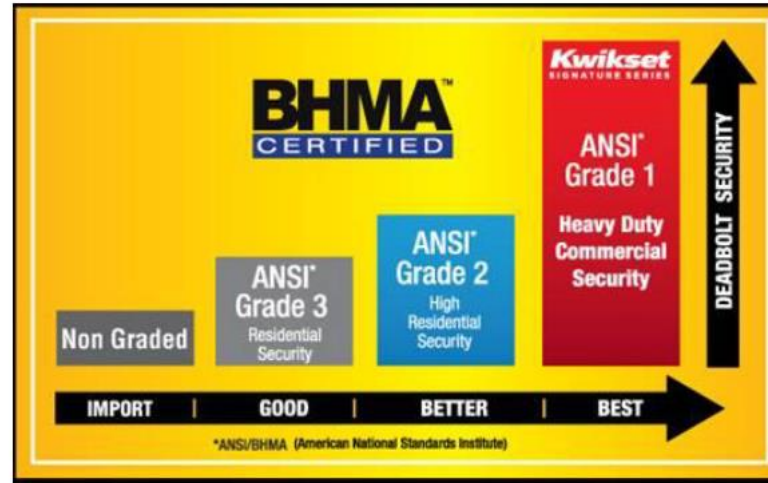
# ***Kwikset***<sup>®</sup>

## Sales Training

# Benefits of Kwikset

<b>Cylinder</b> (deadbolts, keyed knobs & levers)	 <b>SMARTKEY SECURITY</b>
 Best: Grade 1 Better: Grade 2 Good: Grade 3	
	
	
<i>Market Leading Designer Styles</i>	

# BHMA Grading



**BEST**

GRADE 1 Highest Residential Security Available

**Kwikset**  
*Signature Series*

**BETTER**

GRADE 2 Heavy Duty Residential Light Commercial

**Kwikset**  
*Signature Series*

**GOOD**

GRADE 3 Standard Residential

**Kwikset**



## Security Made Convenient

**One Key** for All Your Locks



- SmartKey Security features re-key technology, which allows you to re-key your locks yourself in seconds
- We realize the person who has your key today may not be the same person you want to have your key tomorrow

### REASONS TO RE-KEY



Loaned or  
Unreturned Keys



Your child has lost  
their key, again



Recently moved,  
tenant turnover



You have a different  
key for each door

# Smartkey Benefits



## It protects against common break-in methods

- Kwikset's SmartKey Security™ is designed to protect against these type of break-ins and keep your family safe



KICK-IN  
RESISTANT



BUMP  
PROOF



PICK  
RESISTANT



DRILL  
RESISTANT



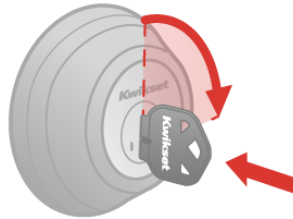
SAW  
RESISTANT

- SmartKey Security also allows you to re-key the lock yourself in seconds, leaving lost or unreturnable keys obsolete

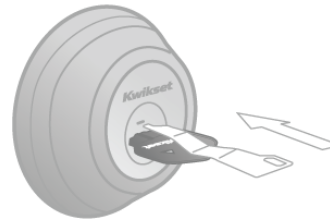
# Smartkey – How To Re-Key



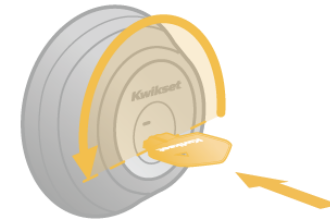
**!** You must have your functioning key & the learn tool for the system to work.



**1** Insert functioning key & turn 1/4 turn clockwise.



**2** Insert & remove the SmartKey learn tool. Remove functioning key.



**3** Insert new key & turn 1/2 turn counter-clockwise. Done. Your lock is now re-keyed!

- *The lock you can rekey yourself in seconds*

Smart Key  
Tool



*\*included with the closing key package that will be assigned to each house.*

## Important Notes:

- Both the key and learn tool must be **FULLY** inserted for the process to properly work.
- Only turn the functioning key ¼ turn.

# Smartkey Video



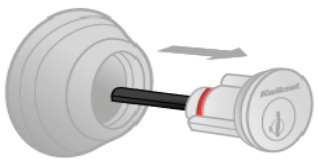
(Double Click Video)



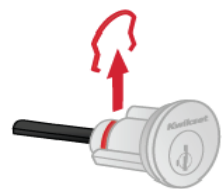
# Reset Cradle

## Demonstration

### How to use a Reset Cradle



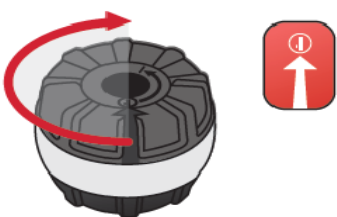
**1** Unscrew the back of the deadbolt & remove the cylinder from the deadbolt casing.



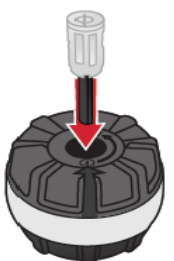
**2** Remove the C-clip that holds the cylinder plug.



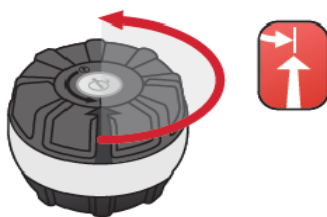
**3** Remove the cylinder plug from the housing unit.



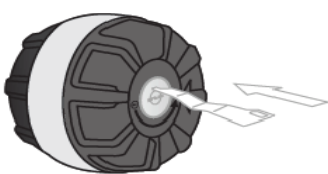
**4** Hold the bottom firmly & rotate the top section clockwise. The arrow should point to the lock icon.



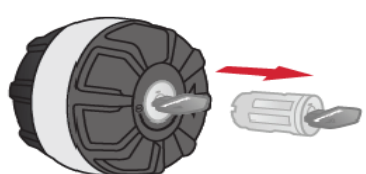
**5** Insert the cylinder all the way into the inner dial.



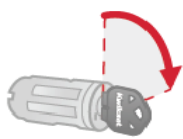
**6** Rotate the top section counter-clockwise until it stops. The arrow should meet with the top arrow.



**7** Insert the SmartKey tool & push with force until it clicks. Remove the SmartKey tool.

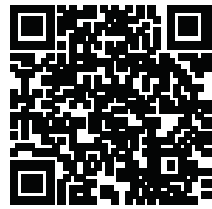


**8** Insert the new key, while being sure not to rotate the plug. Remove the plug by gently pulling the key.



**9** Hold the cylinder body & rotate the key 90° clockwise. Remove the key.

- Important Notes:**
- Reset Cradles are only required if the cylinder is locked up during the re-keying process.
  - Lock up occurs by the key not being fully inserted into the cylinder before turning back counter clockwise.
  - Each Retail Center will need to have 1-2 reset cradles available to prevent replacement locks being sent to the field.
  - Training videos are available .



# Clayton Smartkey Process



## NEW TECHNOLOGY

Locking bar, racks and pins are made out of stainless steel for increased strength and durability.

## SUPERIOR SECURITY

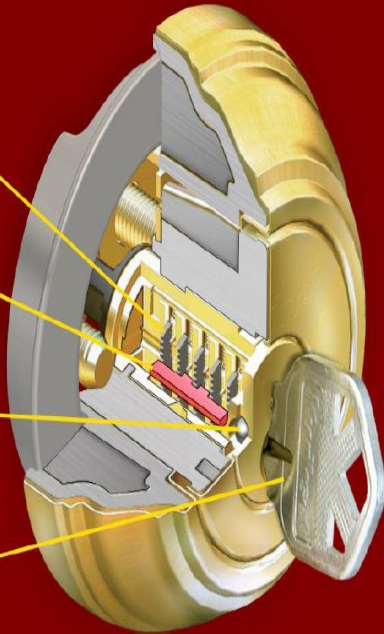
Patented side locking bar technology replaces a traditional pin & tumbler design for increased security against bump and pick attacks

## DRILL RESISTANCE

Cylinder uses two steel balls inserted into the front of the key face to resist attack from drilling.

## KEY IT YOURSELF

Lock is rekeyable by using the included learn tool in less than 30 seconds without removing the lock from the door.



## Clayton Smartkey Process Overview:

- All Clayton keyed entry product will be keyed to 53435
- New keys will need to be distributed by all plants to the Retail Centers for distribution.
- All Retail Centers and Construction Set Crews will need to be trained on the keying process.
- Multiple videos are available to assist with the training process, but live trainings will be needed.
- Ideally the keying will occur at the final Welcome Home Walk, but Retail Centers have the flexibility to customize the keying process.
- Clayton will assign a key pack to each home at the time of production. The key pack will include 4 keys cut alike, a learn tool, and written instructions.
- Key tracking is eliminated with Smartkey from the time the home leaves the plant to the time of ownership exchange. If a key pack gets lost, or a new key needs to be assigned, Smartkey allows that flexibility.

# Kwikset Warranty

## **Kwikset**

### Product Warranty Information

*Kwikset products are backed by one of the most comprehensive warranty programs available. You can feel confident that with the purchase of Kwikset you have selected the best quality product, backed by the best customer service available.*

---

#### LIFETIME MECHANICAL & FINISH WARRANTY

---

This product comes with a lifetime mechanical and finish warranty to the original residential user of Kwikset against defects in material and workmanship as long as the original user occupies the residential premises upon which the product was originally installed. One year electronic warranty. This warranty **DOES NOT COVER** scratches; abrasions; deterioration due to the use of paints, solvents or other chemicals; abuse; misuse; or product(s) used in commercial applications. Upon return of a defective product to Kwikset Corporation, Kwikset may repair or replace the product or refund the purchase price. **Kwikset is not liable for incidental or consequential damages.** Some states do not allow the exclusion or limitation of incidental or consequential damages, so the above exclusion may not apply to you. This warranty gives you specific legal rights and you may also have other rights that vary from state to state. If a mechanical or finish defect occurs, please call 1-800-327-LOCK (5625) in the U.S. and Canada or return it to Kwikset Corporation, Consumer Services, 19701 Da Vinci, Lake Forest, CA 92610. For customers outside of the U.S. and Canada, claims under this warranty must be made only to either the place of purchase or to the listed importer.

**Consumer Services**  
**19701 Da Vinci**  
**Lake Forest, CA 92610**  
**1-800-327-LOCK**

LIT 7-9-37 11/10 16366

PROTECTION THAT LIVES ON

# MICROBAN®



**Kwikset with Microban:**

<https://www.kwikset.com/microban>

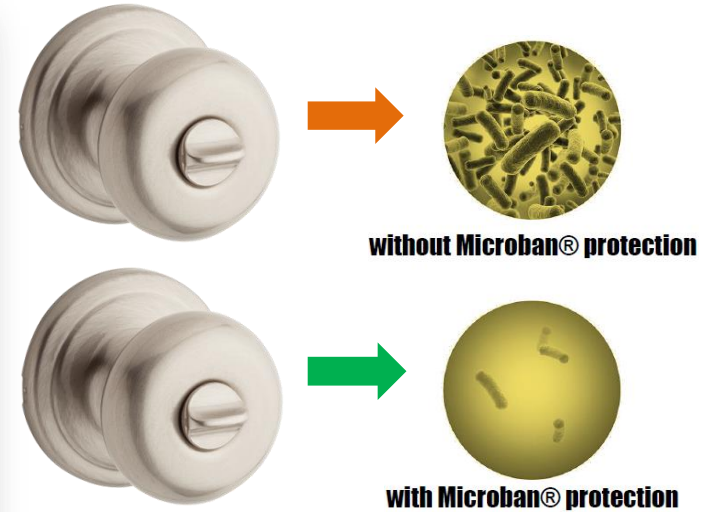


## Hardware for a cleaner home.

With each and every interaction throughout the day, the products we use can be exposed to bacteria, which can double in number every twenty minutes. Kwikset hardware with Microban antimicrobial product protection stops microbes at the door.

### 99.9% Cleaner than Unprotected Surfaces

Kwikset® and Microban®, the global leader in built-in antimicrobial protection, have teamed up to improve the standard for door hardware. Kwikset® will now offer antimicrobial protection on select products, inhibiting the growth of bacteria on frequently touched door hardware in your home.



### Available Finishes on Select Products

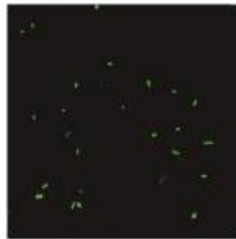




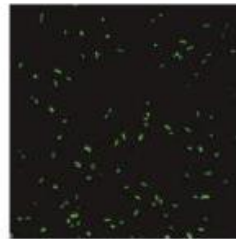


## Microban™ vs. Unprotected view of bacteria over 1 day

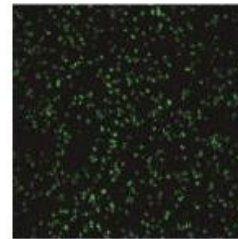
### Unprotected



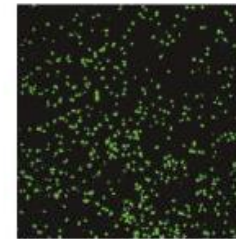
2 Hours



16 Hours



20 Hours



24 Hours

### Microban® Antimicrobial Protection



2 Hours



16 Hours



20 Hours



24 Hours

\*NC State study using confocal imagery equipment



**Kwikset YouTube Channel:**

<https://www.youtube.com/kwikset>



**SmartKey Security Troubleshooting:**

<https://goo.gl/qwg7Pv>



**Using a Re-set Cradle:**

<https://goo.gl/b8DTLX>



**Kwikset with Microban:**

<https://www.kwikset.com/microban>