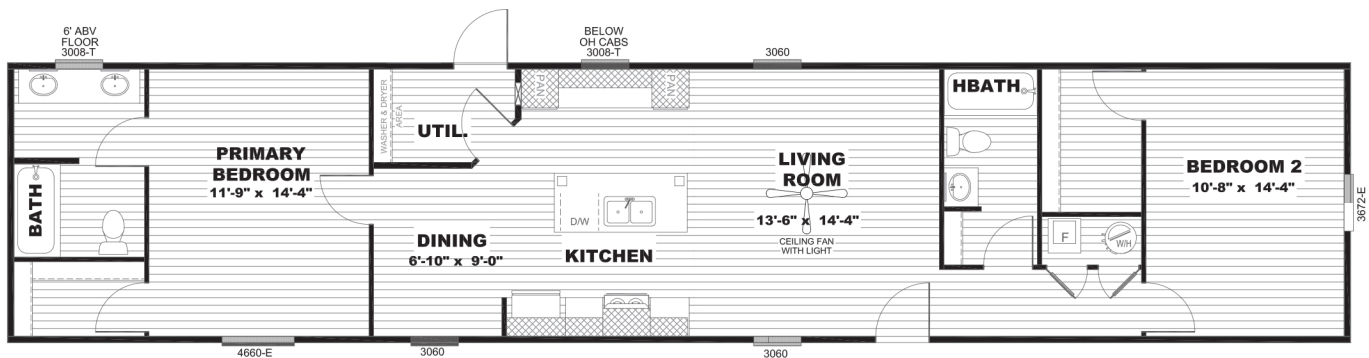


# Select

SERIES

**SEL16722SH**

1,080 SQ. FT | 2 BED 2 BATH



## EXTERIOR

- Argon Gas Low E Thermal Pane Windows
- 38" x 82" Craftsman Front Door With Storm
- Cottage Rear Door
- Vinyl Exterior Siding w/Composition Roof
- 5" Lineal Window Trim
- 4" Vented Eaves
- 12" I-Beam
- Full Length Outriggers(Ext Wall Support)
- Tongue and Groove OSB Decking
- 2 X 6 Floor Joist- 16" OC
- 2 X 4 Exterior Walls
- 2 X 3 Interior Walls
- 20# Roof Load
- Removable Hitch
- Mulled Window In Hitch End Bedroom

## APPLIANCES

- Samsung Stainless Steel 18 Cu Ft. Frost Free Refrigerator
- Samsung Stainless Steel 30" Electric Range
- Samsung Stainless Steel Dishwasher
- 40 gal. Rheem Hybrid Heat Pump Water Heater
- Carrier Electric Furnace (Down Flow)
- Ecobee Programmable Thermostat

## EBUILT INSULATION

- R-38 Climate Pro Ceiling Insulation
- ((C-Pro Insulation is Formaldehyde Free))
- R-15 Fiberglass Insulation in Walls
- R-22 Fiberglass Insulation in Floors

## BATHS

- 60" x 40" Tub Shower in Primary Bath
- 60" Tub / Shower Guest Bath
- Pfister Brushed Nickel Faucets with Lever Handles
- GFI Receptacle
- Power Bath Fan in Both Baths
- Access Panels to all Plumbing

## KITCHEN

- 42" Cabinet System
- Duracraft 3/4 Shaker Style Cabinet Doors
- Hidden Hinges on all Cabinet Doors
- White Finished Drawer Boxes
- Metal Roller Drawer Guides
- Lined Overhead Cabinets
- Lined Base Shelf
- Kwikset Brushed Nickel Interior Door Knobs
- Pfister Brushed Nickel Faucets
- Double Bowl Stainless Steel Sink

## INTERIOR

- 8 Foot Flat Ceilings
- Lino Throughout
- 2" Cordless Blinds Throughout
- 44" Wide Hallways
- White 2 Panel Square Interior Doors
- 3 Hinges on all Interior Passage Doors
- Black Cabinet Hardware
- 52" Ceiling Fan in Living Room
- Wire and Braced for Ceiling Fan in Primary bedroom
- Can Lights Throughout

## UTILITY ROOM

- Total Electric with 200 Amp Service
- GFI Protected Exterior Outlet Front Door Side
- Copper Wiring Throughout
- Plumb and Wired for Washer
- Wired and Vented for Dryer
- Water Shut Offs Throughout
- Whole House Ventilation System
- Wire Utility Shelf

## POPULAR OPTIONS

- **Smart Panel Exterior Siding with 6" window trim**
- **Gas Furnace/ Gas Range**
- **30lb Roof Load**
- **40lb Roof Load**
- **Wind Zone II & Wind III**
- **Shower Option in Primary Bath**

**Clayton**  
waco