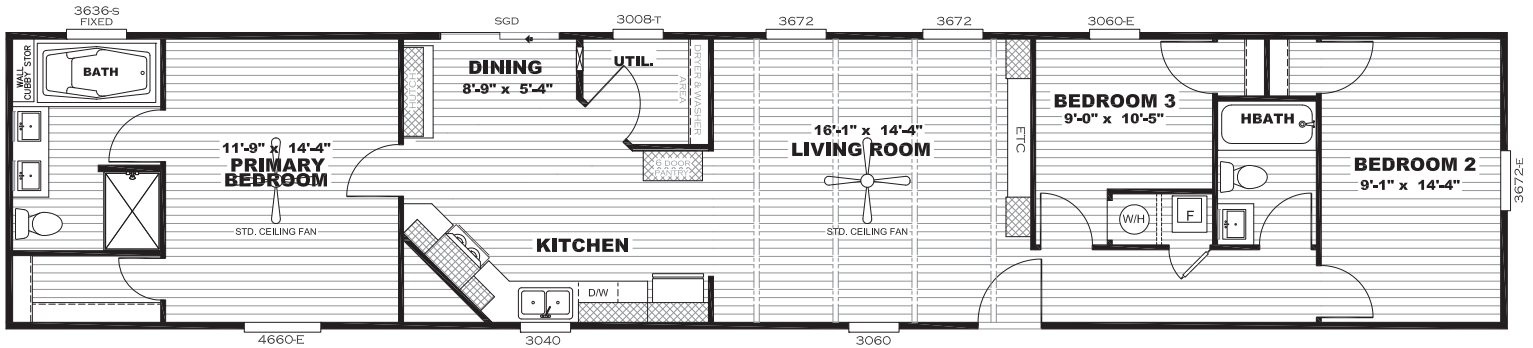


ANNIVERSARY SERIES

ANN16763FH

16 X 76 | 1140 SQ. FT. | 3 BED | 2 BATH



STANDARD FEATURES

EXTERIOR

- Low E Thermal Pane Windows
- 38"x82" Craftsman Front Door with Storm
- Sliding Glass Rear Door
- Vinyl Exterior Siding w/Composition Roof
- 5" Lineal Window Trim
- 12" Hitch End Overhang
- 12 1/2" I-Beam
- 4" Vented Eaves
- Full Length Outriggers(Ext Wall Support)
- Tongue and Groove OSB Decking
- 2 X 6 Floor Joist- 16" OC
- 2 X 4 Exterior Walls
- 2 X 3 Interior Walls
- 20# Roof Load
- Removable Hitch
- Mulled Windows in Living and Hitch End Bedroom
- 30 X 40 Window over Kitchen Sink
- Rear Exterior Faucet

APPLIANCES

- 18 Cu Ft. Frost Free Refrigerator
- 30" Electric Range
- Dishwasher
- Range Hood with Light and Fan
- 40 Gallon Electric Water Heater
- Carrier Electric Furnace (Down Flow)

ENERGY SMART

- R22-13-33 Insulation
- A Coil Housing Box
- Ecobee Programmable Thermostat
- LED Bulbs

UTILITY ROOM

- Total Electric with 200 Amp Service
- GFI Protected Exterior Outlet Front Door Side
- Copper Wiring Throughout
- Plumb and Wired for Washer
- Wired and Vented for Dryer
- Water Shut Offs Throughout
- Whole House Ventilation System
- Interior Utility Door
- Wire Utility Shelf
- Transom Window

INSULATION

- R-33 Climate Pro Ceiling Insulation ((C-Pro Insulation is Formaldehyde Free))
- R-13 Fiberglass Insulation in walls
- R-22 Fiberglass Insulation in floors

BATHS

- 72" Deck Tub in primary bath
- 48" Shower with Glass Doors
- China Sinks w/ Furniture Style Lavy
- 60" Tub/Shower Guest Bath
- Pfister Brushed Nickel Faucets with Lever Handles
- Pfister pop up drains
- Opaque window over Primary Bath Tub
- Accent Over Sinks in Primary Bath
- GFI Receptacle
- Power Bath Fan in both baths
- Access Panels to all plumbing

KITCHEN

- 42" Cabinet System
- Duracraft 3/4 Shaker Style Cabinet Doors
- Hidden Hinges on all Cabinet Doors
- White Finished Drawer Boxes
- Metal Roller Drawer Guides
- Lined Overhead Cabinets
- Lined Base Shelves
- Center Shelves in Base Cabinets
- Kwikset Brushed Nickel Interior Door Knobs
- Pfister Brushed Nickel Faucets
- Stainless Farmhouse Kitchen Sink w/ Spring Loaded Faucet
- Cabinet above Refrigerator

INTERIOR

- 8 ft flat tape and textured ceilings
- Lino throughout
- 2" Cordless Blinds Throughout
- 44" Wide Hallways
- White 2 Panel Cathedral Interior Doors
- 3 Hinges on all Interior Passage Doors
- 52" Ceiling Fan in Living Room
- 52" Ceiling Fan in Primary Bedroom
- Black cabinet hardware
- Entertainment Center (Cable Jack)
- (4) Ceiling Beams Living Room
- Can lights throughout

POPULAR OPTIONS

- Smart Panel Exterior Siding with 6" Alabaster window trim
- Gas Furnace
- Gas Range
- Gas Water Heater
- Dream Kitchen (Black or Stainless)
 - Smooth Top Range
 - Side X Side Refrigerator
 - Microwave

- 30lb Roof Load
- 40lb Roof Load
- Wind Zone II & Wind III
- Electric Overhead Air

