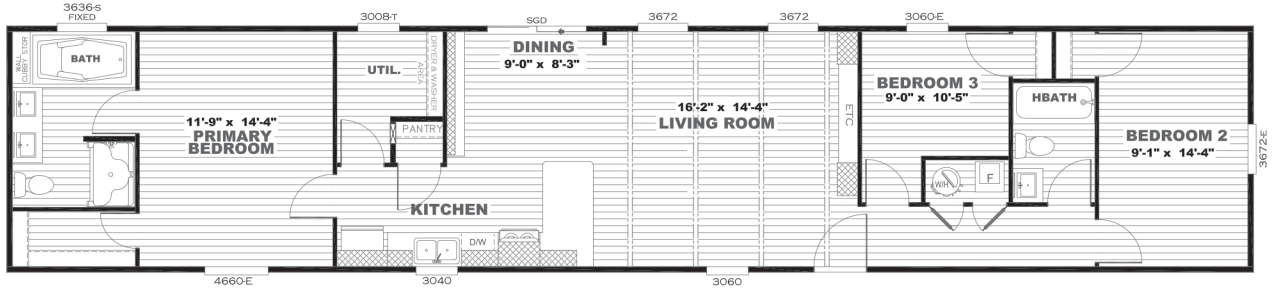
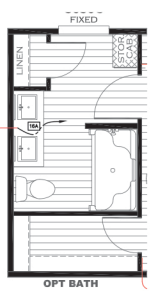




ANNIVERSARY SERIES

ANN16763AH

16 X 76 | 1140 SQ. FT. | 3 BED | 2 BATH



STANDARD FEATURES

EXTERIOR

- Argon Gas Low E Thermal Pane Windows
- 38"x82" Craftsman front door with storm
- Sliding Glass Rear Door
- Vinyl Exterior Siding w/Composition Roof
- 5" lineal window trim
- 12" Hitch End Overhang
- 12" I-Beam
- 4" Vented Eaves
- Full Length Outriggers (Ext Wall Support)
- Tongue and Groove OSB Decking
- 2 X 6 Floor Joist- 16" OC
- 2 X 4 Exterior Walls
- 2 X 3 Interior Walls
- 20# Roof Load
- Removable Hitch
- Mulled window hitch end
- 30 X 40 Window over Kitchen Sink
- GFI Protected Exterior Outlet Front Door Side

BUILT INSULATION

- R-38 Climate Pro Ceiling Insulation
- ((C-Pro Insulation is Formaldehyde Free))
- R-15 Fiberglass Insulation in walls
- R-22 Fiberglass Insulation in floors

APPLIANCES

- Energy Star 18 Cu Ft. Frost Free Refrigerator
- 30" Electric Range
- Energy Star Dishwasher
- Range Hood with Light and Fan
- 40 gal. Rheem Hybrid Heat Pump Water Heater
- Carrier Electric Furnace (Down Flow)
- Ecobee Programmable Thermostat

KITCHEN

- 42" Cabinet System
- Duracraft 3/4 Shaker Style Cabinet Doors
- Hidden Hinges on all Cabinet Doors
- White Finished Drawer Boxes
- Metal Roller Drawer Guides
- Lined Overhead Cabinets
- Lined Base Shelves
- Center Shelves in Base Cabinets
- Kwikset Brushed Nickel Interior Door Knobs
- Pfister Brushed Nickel Faucets
- Stainless Farmhouse Kitchen Sink w/ Spring Loaded Faucet
- Cabinet above Refrigerator

BATHS

- 72" Deck Tub in primary bath
- 48" Shower with Glass Doors
- China Sinks w/ Furniture Style Lav
- 60" Tub/Shower Guest Bath
- Pfister Brushed Nickel Faucets with Lever Handles
- Pfister pop up drains
- Opaque window over Primary Bath Tub
- Accent Over Sinks in Primary Bath
- GFI Receptacle
- Power Bath Fan in both baths
- Access Panels to all plumbing

UTILITY ROOM

- Total Electric with 200 Amp Service
- Copper Wiring Throughout
- Plumb and Wired for Washer
- Wired and Vented for Dryer
- Water Shut Offs Throughout
- Whole House Ventilation System
- Wire Utility Shelf
- Whole House Dehumidifier Ready

INTERIOR

- 8" Flat tape and textured ceilings
- Lino throughout
- 2" Cordless Blinds Throughout
- White 2 Panel Cathedral Interior Doors
- 3 Hinges on all Interior Passage Doors
- Energy Star Ceiling Fan in Living Room
- Energy Star Ceiling Fan in Primary Bedroom
- Black cabinet hardware
- Can LED lights throughout

POPULAR OPTIONS

- Smart Panel Exterior Siding with 6" window trim
- Gas Furnace/ Gas Range
- Dream Kitchen (Black or Stainless)
 - Smooth Top Range
 - Side X Side Refrigerator
 - Microwave
- Electric Overhead Air
- 30lb Roof Load

- 40lb Roof Load
- Wind Zone II & Wind III
- Black Hardware Package
- Shower Only option Primary Bath
- Fiberglass Bath Fixtures

